

PowerPROview

Power Analyzer II

How To Guide

01 February, 2008

TABLE OF CONTENTS

Introduction..... 1

Connecting the POWERLink 1

Real-Time Data 1

Changing the Display Layout..... 2

Customizing the Startup Screen 3

PowerPROview

Power Analyzer II How To Guide

Introduction

This manual deals with a Power Analyzer II connected to the PowerPROview software using a POWERLink USB Adapter. For information on operating the PowerPROview software see the PowerPROview Software Users Guide. For more info on the Power Analyzer II see the Power Analyzer II Manual.

The Power Analyzer II is a great field tool that helps you check your setup and batteries. The Power Analyzer II Manual shows various means of using the Power Analyzer II as a stand alone meter. With the PowerPROview software and a POWERLink USB Adapter you can connect your Power Analyzer II to your computer and obtain real-time data information from the PA II.

Connecting the POWERLink

Connect the POWERLink cable to the Ext PWR port of the PA II making sure that the black (or brown) wire on the POWERLink cable is lined up with the "B" on the Ext Pwr legend. Connect the USB cable to your computer and start PowerPROview.

Note that while connected to the USB cable and the computer the PA II will be powered from the USB power.

Real-Time Data

Once the PA II is connected to the Computer and PowerPROview you can start real-time data streaming from the PA II to the computer by clicking on the Start Data




Streaming button . Clicking it again will stop the data streaming. While data is streaming you can view the data using the various data objects that you can place on a data view (see the PowerPROview software users guide for creating a data view). With real-time data streaming you can also record and graph that data (see the Power Analyzer II Software User Guide).

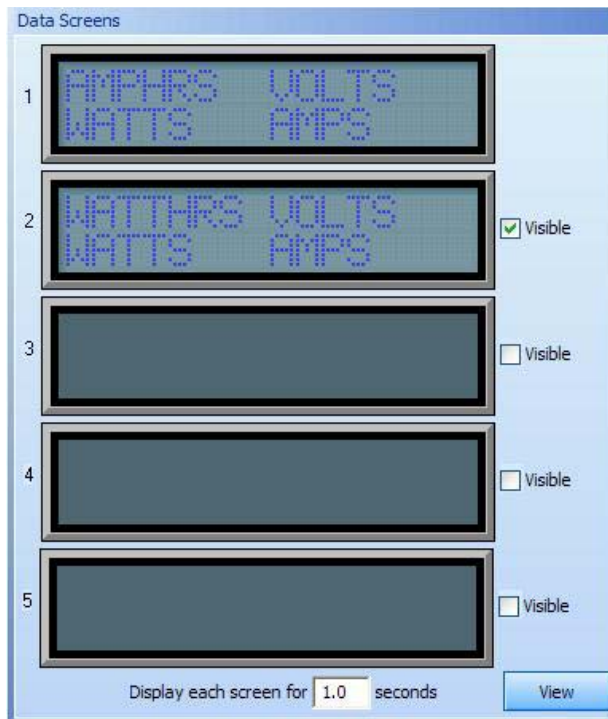
PowerPROview

Power Analyzer II How To Guide

Changing the Display Layout

The position and values displayed on the LCD screen of the PA II can be changed to your liking. Use the PA II Configuration button  to bring up the configuration screen. When the configuration screen opens it reads the current configuration information from the PA II and displays those values.

Click on the Data tab to get the screen configurations:



You can configure up to five (5) screens with the different data values available and the rate at which the screens change. Right click on one of the four data positions to select the data value to display in that location or no value.

Set the number of seconds that each screen should be viewed for and click the


Write Configuration to PA II button  to send the new configuration to the PA II.

PowerPROview

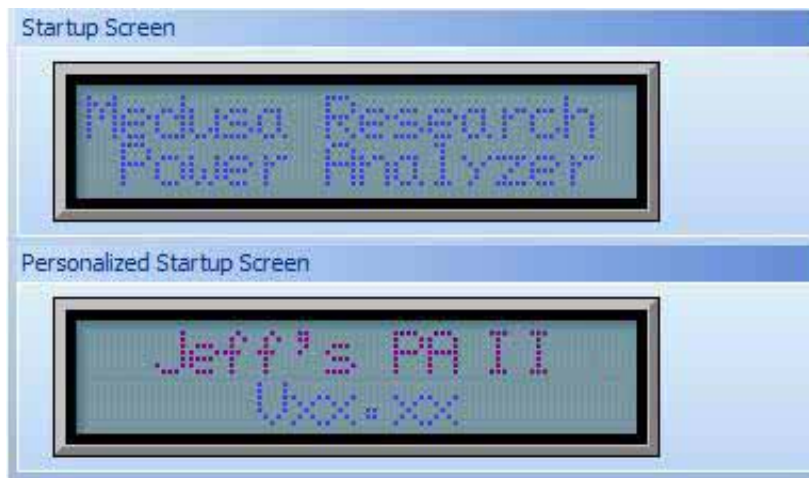
Power Analyzer II How To Guide

Customizing the Startup Screen


When the PA II powers up the first screen shows the company name and then a second screen displays showing the firmware version on the bottom line. The top line can be customized to say whatever you want up to 16 characters. You put your name or favorite phrase to indicate that it is your PA II.

Use the PA II Configuration button  to bring up the configuration screen. When the configuration screen opens it reads the current configuration information from the PA II and displays those values.

Click on the Startup Screen tab to get the screen configurations:



Double click on the first line and enter the text of your message and click ok. Right click to select options for: Center Justify, Left Justify, Right Justify, Upper Case, Lower Case, and Proper Case.

Click on the Write Configuration to PA II button  to send the new configuration to the PA II. The next time the PA II starts up you will see your new personalized screen.